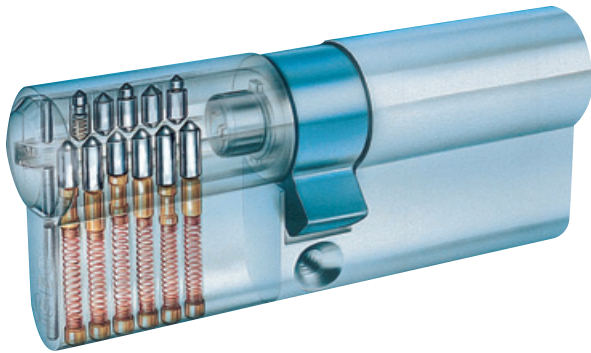


**Chiavi grezze**  
**Cilindri**  
**Lucchetti**

**Blank keys**  
**Cylinders**  
**Padlocks**

49  
128





**1** Sistema di chiusura brevettato con chiavi in alpacca di elevato spessore, che permettono di avere:

- Una elevata resistenza alla torsione;
- Un maggior numero di salti sulle chiavi (maggior numero di combinazioni);
- Maggior resistenza al picking

Patented locking system with thick nickel silver keys, which allows:

- High resistance to torsion;
- More depths on the keys (more combinations);
- Higher picking resistance.

**2** Testa del cilindretto bombata con intaglio per facilitare l'introduzione della chiave e aumentare la resistenza alla torsione.

Crowned & notched cylinder plug head to allow easier introduction of the key and increase resistance to torsion.

**3** Particolare conformazione del foro chiave del cilindro in grado di limitare l'introduzione di grimaldelli e attrezzi di scasso.

A special cylinder key profile to help prevent the use of picks & breaking tools.

**4** Protezione supplementare antitrapano nel cilindro e nel corpo.

Additional anti-drill protection.

**5** N. 11 pistoncini in acciaio inox per un'alta resistenza all'usura con combinazione attiva e passiva nella parte superiore.

11 stainless steel pins provide higher resistance.

**6** Le cifrature sono in conformità alla bozza di norma europea e alla norma DIN con un numero elevato di combinazioni (fino a 600.000 combinazioni reali).

Key combinations are in compliance with the European standard draft and the DIN standard.

**7** Una alta capacità di sviluppo di impianti MK e CK, una grande elasticità sulle interferenze per lo sviluppo degli impianti speciali e la facilità di ampliamento futuro dei sistemi ISEO già esistenti.

High development capacity of MK and CK systems.

**8** Pistoncino attivo brevettato.

Patented active pin.

**9** I cilindri sono conformi a quanto richiesto nel capitolo della "Prova di Durabilità" della Norma EN 1303 per la classe N°5, pari a 50.000 cicli.

The cylinders comply with the durability requirement of the standard EN 1303: grade 5 (50.000 cycles).

**10** Design ed Ergonomia nella medaglia plastificata della chiave.

Design and Ergonomy on plasticized key head.

Azienda con sistema di qualità certificato



ISO 9001:2000 - Cert. n° 25

## La Qualità - Quality

ISR11, come tutti i prodotti Iseo, è sottoposto ad uno scrupoloso controllo di qualità in tutto il ciclo produttivo secondo le procedure di certificazione ISO 9001.

The ISR11, like all Iseo products undergoes scrupulous quality control throughout the entire production cycle in conformity to ISO 9001 certification procedures.

**Cilindro di  
sicurezza  
in ottone**

Security  
Brass cylinder

**ISEO Serrature**

**Con spina  
antitrapano**

With antidrill  
pin cylinder

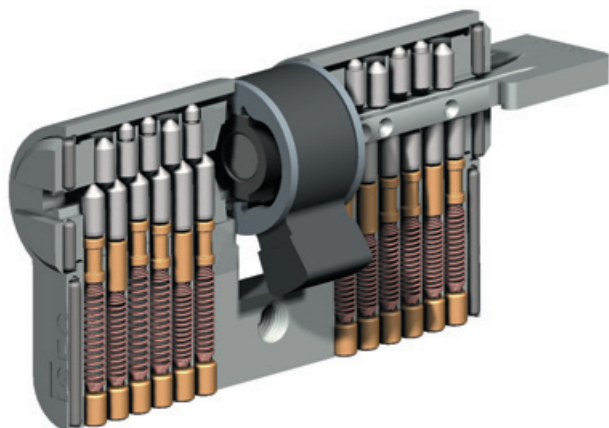
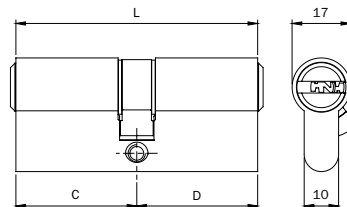
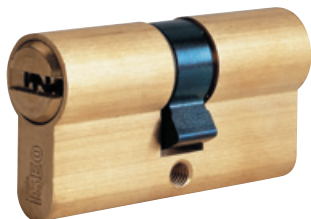
**ISR11**





**Parti in  
dotazione:**

- 5 chiavi
- Code Card
- vite di fissaggio da mm 85

**Provided  
with:**

- 5 keys
- Code Card
- fixing screw 85 mm



				Codice Code					
				Camma Din sporgente Off center DIN cam					
	L mm.	Articolo Article	C	D		Status			Min. ord.
11	56	8909	28	28	7	B	1	5	5
11	60	8909	30	30	7	B	1	5	5
11	61	8909	28	33	7	D	1	5	5
11	65	8909	30	35	7	C	1	5	5
11	70	8909	30	40	7	C	1	5	5
11	70	8909	35	35	7	C	1	5	5
11	75	8909	30	45	7	D	1	5	5
11	75	8909	35	40	7	C	1	5	5
11	80	8909	30	50	7	D	1	5	5
11	80	8909	35	45	7	D	1	5	5
11	80	8909	40	40	7	C	1	5	5
11	85	8909	30	55	7	D	1	5	5
11	85	8909	35	50	7	D	1	5	5
11	85	8909	40	45	7	C	1	5	5
11	90	8909	30	60	7	D	1	-	1
11	90	8909	40	50	7	D	1	-	1
11	90	8909	45	45	7	C	1	-	1
11	95	8909	30	65	7	D	1	-	1
11	95	8909	40	55	7	D	1	-	1
11	100	8909	30	70	7	D	1	-	1
11	100	8909	35	65	7	D	1	-	1
11	100	8909	40	60	7	D	1	-	1
11	100	8909	50	50	7	D	1	-	1
11	105	8909	30	75	7	D	1	-	1
11	105	8909	50	55	7	D	1	-	1
11	110	8909	30	80	7	D	1	-	1
11	110	8909	50	60	7	D	1	-	1
11	120	8909	65	55	7	D	1	-	1
		8909	**	**	7	•8	-	-	-

A richiesta  
cilindri K.A.  
On request  
K.A. cylinders

**Cilindro di  
sicurezza  
in ottone  
nichelato  
opaco**

Security  
mat nickel  
plated  
brass cylinder

**Con spina  
antitrapano**

With antidrill  
pin cylinder

**ISR11**

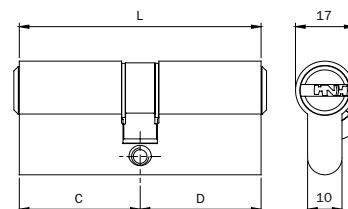
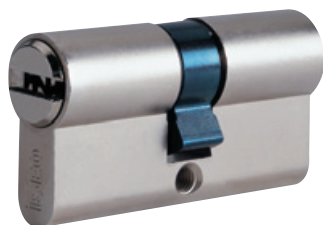
**ISEO Serrature**

**Parti in  
dotazione:**

- 5 chiavi
- Code Card
- vite di  
fissaggio da  
mm 85

**Provided  
with:**

- 5 keys
- Code Card
- fixing screw  
85 mm



		Codice Code							
		Camma Din sporgente Off center DIN cam							
	L mm.	Articolo Article	C	D		Status			Min. ord.
11	56	8909	28	28	9	C	1	5	5
11	60	8909	30	30	9	A	1	5	5
11	61	8909	28	33	9	C	1	5	5
11	65	8909	30	35	9	B	1	5	5
11	70	8909	30	40	9	A	1	5	5
11	70	8909	35	35	9	B	1	5	5
11	75	8909	30	45	9	B	1	5	5
11	75	8909	35	40	9	B	1	5	5
11	80	8909	30	50	9	A	1	5	5
11	80	8909	35	45	9	B	1	5	5
11	80	8909	40	40	9	A	1	5	5
11	85	8909	30	55	9	B	1	5	5
11	85	8909	35	50	9	B	1	5	5
11	85	8909	40	45	9	B	1	5	5
11	90	8909	30	60	9	B	1	-	1
11	90	8909	40	50	9	A	1	-	1
11	90	8909	45	45	9	B	1	-	1
11	95	8909	30	65	9	D	1	-	1
11	95	8909	40	55	9	B	1	-	1
11	100	8909	30	70	9	B	1	-	1
11	100	8909	35	65	9	C	1	-	1
11	100	8909	40	60	9	A	1	-	1
11	100	8909	50	50	9	C	1	-	1
11	105	8909	30	75	9	D	1	-	1
11	105	8909	50	55	9	C	1	-	1
11	110	8909	30	80	9	C	1	-	1
11	110	8909	50	60	9	C	1	-	1
11	120	8909	65	55	9	C	1	-	1
		8909	**	**	9	•8	-	-	-

A richiesta  
cilindri K.A.  
On request  
K.A. cylinders

**Cilindro di sicurezza in ottone**

Security Brass cylinder

**Con spina antitrapano**

With antidrill pin cylinder

**“Doppia funzione”**

“Double entry function cylinder”

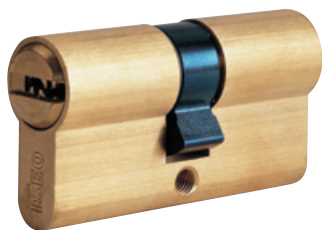
**ISR11**

**Parti in dotazione:**

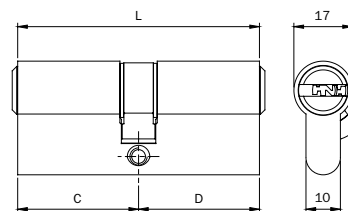
- 5 chiavi
- Code Card
- vite di fissaggio da mm 85





Provided with:

- 5 keys
- Code Card
- fixing screw 85 mm



**ISEO Serrature**



				Codice Code					
				Camma Din sporgente Off center DIN cam					
	L mm.	Articolo Article	C	D		Status			Min. ord.
11	60	8999	30	30	7	D	1	5	5
11	65	8999	30	35	7	D	1	5	5
11	70	8999	30	40	7	D	1	5	5
11	70	8999	35	35	7	D	1	5	5
11	75	8999	30	45	7	D	1	5	5
11	75	8999	35	40	7	C	1	5	5
11	80	8999	30	50	7	D	1	5	5
11	80	8999	35	45	7	D	1	5	5
11	80	8999	40	40	7	D	1	5	5
11	85	8999	30	55	7	D	1	5	5
11	85	8999	35	50	7	D	1	5	5
11	85	8999	40	45	7	C	1	5	5
11	90	8999	30	60	7	D	1	-	1
11	90	8999	40	50	7	D	1	-	1
11	90	8999	45	45	7	D	1	-	1
11	95	8999	30	65	7	D	1	-	1
11	95	8999	40	55	7	D	1	-	1
11	100	8999	30	70	7	D	1	-	1
11	100	8999	40	60	7	D	1	-	1
11	100	8999	50	50	7	D	1	-	1
11	105	8999	30	75	7	D	1	-	1
11	110	8999	30	80	7	D	1	-	1
11	110	8999	50	60	7	D	1	-	1
		8999	**	**	7	•8	-	-	-

A richiesta cilindri K.A.  
On request K.A. cylinders

**Cilindro di sicurezza in ottone nichelato opaco**  
**Con spina antitrapano "Doppia funzione"**

Security mat nickel plated brass cylinder

With antidrill pin cylinder "Double entry function cylinder"

**ISR11**

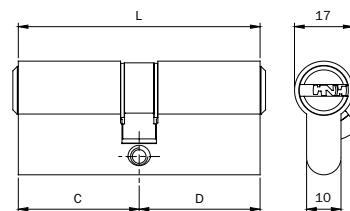
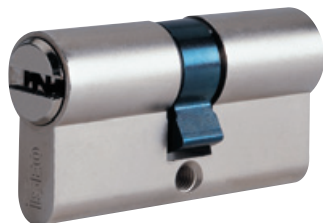
**ISEO Serrature**

**Parti in dotazione:**

- 5 chiavi
- Code Card
- vite di fissaggio da mm 85

**Provided with:**

- 5 keys
- Code Card
- fixing screw



		Codice Code							
		Camma Din sporgente Off center DIN cam							
	L mm.	Articolo Article	C	D		Status			Min. ord.
11	60	8999	30	30	9	C	1	5	5
11	65	8999	30	35	9	B	1	5	5
11	70	8999	30	40	9	C	1	5	5
11	70	8999	35	35	9	D	1	5	5
11	75	8999	30	45	9	D	1	5	5
11	75	8999	35	40	9	D	1	5	5
11	80	8999	30	50	9	D	1	5	5
11	80	8999	35	45	9	C	1	5	5
11	80	8999	40	40	9	C	1	5	5
11	85	8999	30	55	9	D	1	5	5
11	85	8999	35	50	9	D	1	5	5
11	85	8999	40	45	9	D	1	5	5
11	90	8999	30	60	9	D	1	-	1
11	90	8999	40	50	9	B	1	-	1
11	90	8999	45	45	9	C	1	-	1
11	95	8999	30	65	9	D	1	-	1
11	95	8999	40	55	9	D	1	-	1
11	100	8999	30	70	9	D	1	-	1
11	100	8999	40	60	9	C	1	-	1
11	100	8999	50	50	9	D	1	-	1
11	105	8999	30	75	9	D	1	-	1
11	110	8999	30	80	9	D	1	-	1
11	110	8999	50	60	9	D	1	-	1
		8999	**	**	9	•8	-	-	-

A richiesta cilindri K.A.  
 On request K.A. cylinders

Con spina  
antitrapano

With antidrill  
pin cylinder

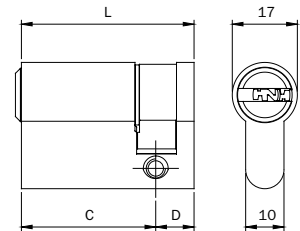
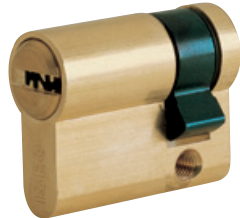
**ISR11**

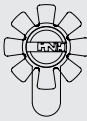



Parti in  
dotazione:

- 5 chiavi
- Code Card
- vite di fissaggio da mm 85

Provided  
with:

- 5 keys
- Code Card
- fixing screw



							Codice Code					
							Camma Din 8 posizioni Off center DIN cam 8 positions					
		L mm.	Articolo Article	C	D		Status			Min. ord.		
<b>Ottone</b> Brass	11	40	8909	30	10	7	D	1	5	5		
	11	45	8909	35	10	7	D	1	5	5		
	11	50	8909	40	10	7	D	1	5	5		
	11	60	8909	50	10	7	D	1	5	5		
	11	65	8909	55	10	7	D	1	5	5		
	11	70	8909	60	10	7	D	1	5	5		
	11	75	8909	65	10	7	D	1	5	5		
	11	80	8909	70	10	7	D	1	-	1		
	11	90	8909	80	10	7	D	1	-	1		
	11	100	8909	90	10	7	D	1	-	1		
	A richiesta cilindri K.A. On request K.A. cylinders			8909	**	**	7	•8	-	-	-	-
<b>Ottone nichelato opaco</b> Mat nickel plated	11	40	8909	30	10	9	B	1	5	5		
	11	45	8909	35	10	9	D	1	5	5		
	11	50	8909	40	10	9	D	1	5	5		
	11	60	8909	50	10	9	D	1	5	5		
	11	65	8909	55	10	9	D	1	5	5		
	11	70	8909	60	10	9	D	1	5	5		
	11	75	8909	65	10	9	D	1	5	5		
	11	80	8909	70	10	9	D	1	-	1		
	11	90	8909	80	10	9	D	1	-	1		
	11	100	8909	90	10	9	D	1	-	1		
	A richiesta cilindri K.A. On request K.A. cylinders			8909	**	**	9	•8	-	-	-	-

**Cilindro di sicurezza in ottone** Security Brass cylinder

**Con spina antitrapano** With antidrill pin cylinder

**“Predisposto pomolo”** “Prearranged for knob”

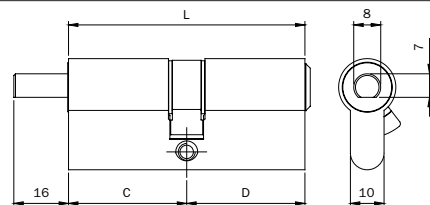
**Parti in dotazione:** Provided with:

- 5 chiavi • 5 keys
- Code Card • Code Card
- vite di fissaggio da mm 85 • fixing screw

**ISR11**



**ISEO Serrature**



		Codice Code							
		Camma Din sporgente Off center DIN cam							
	L mm.	Articolo Article	C	D		Status			Min. ord.
11	56	8969	28	28	7	D	1	5	5
11	60	8969	30	30	7	D	1	5	5
11	61	8969	28	33	7	D	1	5	5
11	61	8969	33	28	7	D	1	5	5
11	65	8969	30	35	7	D	1	5	5
11	65	8969	35	30	7	D	1	5	5
11	70	8969	30	40	7	D	1	5	5
11	70	8969	35	35	7	D	1	5	5
11	70	8969	40	30	7	D	1	5	5
11	75	8969	30	45	7	D	1	5	5
11	75	8969	45	30	7	C	1	5	5
11	80	8969	35	45	7	D	1	5	5
11	80	8969	40	40	7	C	1	5	5
11	80	8969	45	35	7	D	1	5	5
11	90	8969	30	60	7	D	1	-	1
11	90	8969	40	50	7	D	1	-	1
11	90	8969	45	45	7	C	1	-	1
11	90	8969	50	40	7	D	1	-	1
11	90	8969	60	30	7	C	1	-	1
11	100	8969	60	40	7	D	1	-	1
11	105	8969	50	55	7	D	1	-	1
11	105	8969	60	45	7	D	1	-	1
11	110	8969	50	60	7	D	1	-	1
11	110	8969	60	50	7	D	1	-	1
11	110	8969	80	30	7	D	1	-	1
11	120	8969	65	55	7	D	1	-	1
		8969	**	**	7	•8	-	-	-

A richiesta cilindri K.A. On request K.A. cylinders

Per pomoli vedi pag. 119-120 For Knobs page 119-120



**Cilindro di sicurezza in ottone nichelato opaco**

Security mat nickel plated brass cylinder

**Con spina antitrapano "Predisposto pomolo"**

With antidrill pin cylinder "Prearranged for knob"

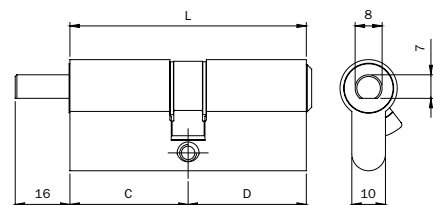
**ISR11**





**Parti in dotazione:**

- 5 chiavi
- Code Card
- vite di fissaggio da mm 85

**Provided with:**

- 5 keys
- Code Card
- fixing screw



		<b>Codice</b> Code							
				<b>Camma Din sporgente</b> Off center DIN cam					
	L mm.	Articolo Article	C	D		Status			Min. ord.
11	56	8969	28	28	9	D	1	5	5
11	60	8969	30	30	9	D	1	5	5
11	61	8969	28	33	9	D	1	5	5
11	61	8969	33	28	9	D	1	5	5
11	65	8969	30	35	9	D	1	5	5
11	65	8969	35	30	9	D	1	5	5
11	70	8969	30	40	9	D	1	5	5
11	70	8969	35	35	9	D	1	5	5
11	70	8969	40	30	9	D	1	5	5
11	75	8969	30	45	9	D	1	5	5
11	75	8969	45	30	9	D	1	5	5
11	80	8969	35	45	9	D	1	5	5
11	80	8969	40	40	9	D	1	5	5
11	80	8969	45	35	9	D	1	5	5
11	90	8969	30	60	9	D	1	-	1
11	90	8969	40	50	9	D	1	-	1
11	90	8969	45	45	9	D	1	-	1
11	90	8969	50	40	9	D	1	-	1
11	90	8969	60	30	9	D	1	-	1
11	100	8969	60	40	9	D	1	-	1
11	105	8969	50	55	9	D	1	-	1
11	105	8969	60	45	9	D	1	-	1
11	110	8969	50	60	9	D	1	-	1
11	110	8969	60	50	9	D	1	-	1
11	110	8969	80	30	9	D	1	-	1
11	120	8969	65	55	9	D	1	-	1
		8969	**	**	9	•8	-	-	-

A richiesta cilindri K.A.  
On request K.A. cylinders

Per pomoli vedi pag. 119-120  
For Knobs page 119-120

**Cilindro di sicurezza in ottone nichelato opaco**  
**Con spina antitrapano "Predisposto pomolo"**

Security mat nickel plated brass cylinder  
 With antidrill pin cylinder "Prearranged for knob"

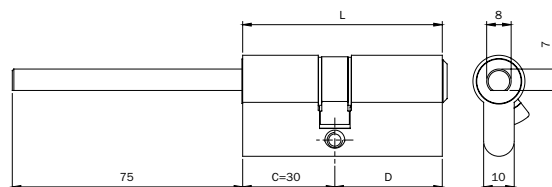
**ISR11**

**Parti in dotazione:**

- 5 chiavi
- Code Card
- vite di fissaggio da mm 85

**Provided with:**

- 5 keys
- Code Card
- fixing screw



**Ottone**  
**Brass**

A richiesta cilindri K.A.  
 On request K.A. cylinders

**Ottone nichelato opaco**  
**Mat nickel plated**

A richiesta cilindri K.A.  
 On request K.A. cylinders

		Codice Code								
		Camma Din sporgente Off center DIN cam								
	L mm.	Articolo Article	C = 30 mm.	D		Status			Min. ord.	
	11	60	8969	D0	30	7	B	1	5	5
	11	65	8969	D0	35	7	D	1	5	5
	11	70	8969	D0	40	7	D	1	5	5
	11	75	8969	D0	45	7	D	1	5	5
	11	80	8969	D0	50	7	D	1	-	1
	11	90	8969	D0	60	7	D	1	-	1
	11	100	8969	D0	70	7	D	1	-	1
			8969	D0	**	7	•8	-	-	-
	11	60	8969	D0	30	9	B	1	5	5
	11	65	8969	D0	35	9	D	1	5	5
	11	70	8969	D0	40	9	B	1	5	5
	11	75	8969	D0	45	9	D	1	5	5
	11	80	8969	D0	50	9	B	1	-	1
	11	90	8969	D0	60	9	C	1	-	1
	11	100	8969	D0	70	9	C	1	-	1
			8969	D0	**	9	•8	-	-	-

**Cilindro di  
sicurezza  
ottone**

Security  
Brass cylinder

**ISEO Serrature**

**Con spina  
antitrapano**

With antidrill  
pin cylinder

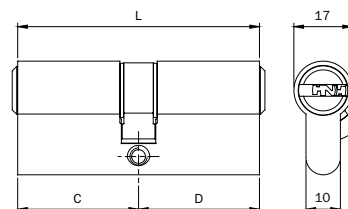
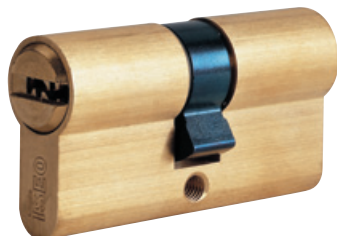
**ISR6**



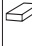

**Parti in  
dotazione:**

- 3 chiavi
- vite di  
fissaggio  
mm 65

**Provided  
with:**

- 3 keys
- fixing screw  
65 mm



				Codice Code							
		Camma Din sporgente Off center DIN cam									
	L mm.	Articolo Article	C	D		Status			Min. ord.		
6	56	8809	28	28	7	B	1	10	10		
6	60	8809	30	30	7	A	1	10	10		
6	61	8809	28	33	7	C	1	10	10		
6	65	8809	30	35	7	B	1	10	10		
6	70	8809	30	40	7	B	1	10	10		
6	70	8809	35	35	7	B	1	10	10		
6	75	8809	30	45	7	C	1	10	10		
6	75	8809	35	40	7	C	1	10	10		
6	80	8809	30	50	7	C	1	10	10		
6	80	8809	35	45	7	B	1	10	10		
6	80	8809	40	40	7	B	1	10	10		
6	85	8809	30	55	7	C	1	10	10		
6	85	8809	35	50	7	C	1	10	10		
6	85	8809	40	45	7	B	1	10	10		
6	90	8809	30	60	7	C	1	10	10		
6	90	8809	40	50	7	B	1	10	10		
6	90	8809	45	45	7	B	1	10	10		
6	95	8809	30	65	7	D	1	10	10		
6	95	8809	40	55	7	C	1	10	10		
6	100	8809	30	70	7	D	1	-	1		
6	100	8809	35	65	7	D	1	-	1		
6	100	8809	40	60	7	C	1	-	1		
6	100	8809	50	50	7	B	1	-	1		
6	105	8809	30	75	7	D	1	-	1		
6	105	8809	50	55	7	D	1	-	1		
6	110	8809	30	80	7	D	1	-	1		
6	110	8809	50	60	7	C	1	-	1		
6	120	8809	65	55	7	D	1	-	1		
		8809	**	**	7	•8	-	-	-	-	
		8809	**	**	7	••5	-	-	-	-	
		8809	**	**	7	•85	-	-	-	-	

**A richiesta:** Cilindri K.A.  
On request: K.A. cylinders

**Con 5 chiavi**  
With 5 keys

**Con 5 chiavi K.A.**  
With 5 K.A. keys

Cilindro di  
sicurezza  
ottone  
nichelato  
opaco

Security  
mat nickel  
plated brass  
cylinder

Con spina  
antitrapano

With antidrill  
pin cylinder

**ISEO** Serrature

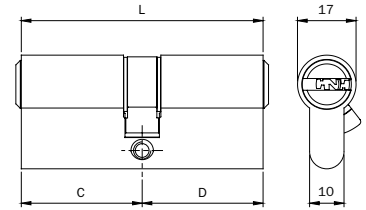
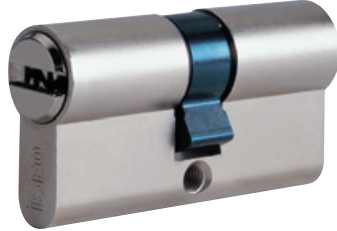
**ISR6**

Parti in  
dotazione:

- 3 chiavi
- vite di  
fissaggio  
mm 65

Provided  
with:

- 3 keys
- fixing screw  
65 mm



		Codice Code					
		Camma Din sporgente Off center DIN cam					
	L mm.	Articolo Article	C	D		Status	Min. ord.
6	56	8809	28	28	9	A	1 10 10
6	60	8809	30	30	9	A	1 10 10
6	61	8809	28	33	9	A	1 10 10
6	65	8809	30	35	9	A	1 10 10
6	70	8809	30	40	9	A	1 10 10
6	70	8809	35	35	9	A	1 10 10
6	75	8809	30	45	9	A	1 10 10
6	75	8809	35	40	9	B	1 10 10
6	80	8809	30	50	9	A	1 10 10
6	80	8809	35	45	9	A	1 10 10
6	80	8809	40	40	9	A	1 10 10
6	85	8809	30	55	9	B	1 10 10
6	85	8809	35	50	9	B	1 10 10
6	85	8809	40	45	9	B	1 10 10
6	90	8809	30	60	9	A	1 10 10
6	90	8809	40	50	9	A	1 10 10
6	90	8809	45	45	9	B	1 10 10
6	95	8809	30	65	9	C	1 10 10
6	95	8809	40	55	9	B	1 10 10
6	100	8809	30	70	9	B	1 - 1
6	100	8809	35	65	9	C	1 - 1
6	100	8809	40	60	9	B	1 - 1
6	100	8809	50	50	9	C	1 - 1
6	105	8809	30	75	9	C	1 - 1
6	105	8809	50	55	9	C	1 - 1
6	110	8809	30	80	9	C	1 - 1
6	110	8809	50	60	9	C	1 - 1
6	120	8809	65	55	9	C	1 - 1
		8809	**	**	9	•8	- - - -
		8809	**	**	9	••5	- - - -
		8809	**	**	9	•85	- - - -

A richiesta: Cilindri K.A.  
On request: K.A. cylinders

Con 5 chiavi  
With 5 keys

Con 5 chiavi K.A.  
With 5 K.A. keys

**Cilindro di sicurezza  
ottone  
Con spina  
antitrapane**

Security  
Brass cylinder  
With antidrill  
pin cylinder

**“Doppia  
funzione”**

“Double entry  
function  
cylinder ”

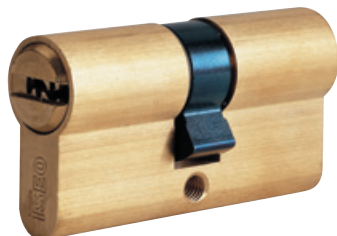
**ISR6**

**Parti in  
dotazione:**

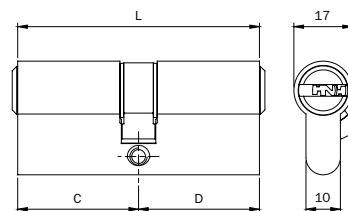
- 3 chiavi
- vite di fissaggio mm 65

**Provided  
with:**

- 3 keys
- fixing screw mm 65



**ISEO Serrature**



		Codice Code							
		Camma Din sporgente Off center DIN cam							
	L mm.	Articolo Article	C	D		Status			Min. ord.
6	60	8899	30	30	7	C	1	10	10
6	65	8899	30	35	7	D	1	10	10
6	70	8899	30	40	7	D	1	10	10
6	70	8899	35	35	7	D	1	10	10
6	75	8899	30	45	7	D	1	10	10
6	75	8899	35	40	7	D	1	10	10
6	80	8899	30	50	7	D	1	10	10
6	80	8899	35	45	7	D	1	10	10
6	80	8899	40	40	7	D	1	10	10
6	85	8899	30	55	7	D	1	10	10
6	85	8899	35	50	7	D	1	10	10
6	85	8899	40	45	7	D	1	10	10
6	90	8899	30	60	7	D	1	10	10
6	90	8899	40	50	7	D	1	10	10
6	90	8899	45	45	7	D	1	10	10
6	95	8899	30	65	7	D	1	10	10
6	95	8899	40	55	7	D	1	10	10
6	100	8899	30	70	7	D	1	-	1
6	100	8899	40	60	7	D	1	-	1
6	100	8899	50	50	7	D	1	-	1
6	105	8899	30	75	7	D	1	-	1
6	110	8899	30	80	7	D	1	-	1
6	110	8899	50	60	7	D	1	-	1
		<b>8899</b>	<b>**</b>	<b>**</b>	<b>7</b>	<b>•8</b>	-	-	-
		<b>8899</b>	<b>**</b>	<b>**</b>	<b>7</b>	<b>•5</b>	-	-	-
		<b>8899</b>	<b>**</b>	<b>**</b>	<b>7</b>	<b>•85</b>	-	-	-

**A richiesta:** Cilindri K.A.  
On request: K.A. cylinders

**Con 5 chiavi**  
With 5 keys

**Con 5 chiavi K.A.**  
With 5 K.A. keys

**Cilindro di sicurezza ottone nichelato opaco**  
**Con spina antitrapano "Doppia funzione"**

Security mat nickel plated brass cylinder

With antidrill pin cylinder "Double entry function cylinder"

**ISR6**

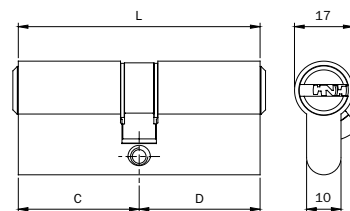
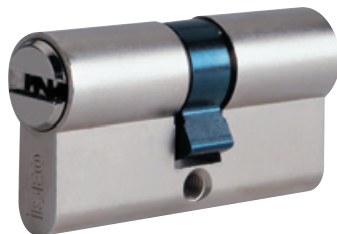
**ISEO Serrature**

**Parti in dotazione:**

- 3 chiavi
- vite di fissaggio mm 65

**Provided with:**

- 3 keys
- fixing screw 65 mm



		Codice Code							
		Camma Din sporgente Off center DIN cam							
	L mm.	Articolo Article	C	D		Status			Min. ord.
6	60	8899	30	30	9	B	1	10	10
6	65	8899	30	35	9	B	1	10	10
6	70	8899	30	40	9	B	1	10	10
6	70	8899	35	35	9	C	1	10	10
6	75	8899	30	45	9	C	1	10	10
6	75	8899	35	40	9	C	1	10	10
6	80	8899	30	50	9	C	1	10	10
6	80	8899	35	45	9	C	1	10	10
6	80	8899	40	40	9	C	1	10	10
6	85	8899	30	55	9	A	1	10	10
6	85	8899	35	50	9	D	1	10	10
6	85	8899	40	45	9	C	1	10	10
6	90	8899	30	60	9	C	1	10	10
6	90	8899	40	50	9	C	1	10	10
6	90	8899	45	45	9	C	1	10	10
6	95	8899	30	65	9	D	1	10	10
6	95	8899	40	55	9	C	1	10	10
6	100	8899	30	70	9	D	1	-	1
6	100	8899	40	60	9	D	1	-	1
6	100	8899	50	50	9	C	1	-	1
6	105	8899	30	75	9	D	1	-	1
6	110	8899	30	80	9	D	1	-	1
6	110	8899	50	60	9	D	1	-	1
		<b>8899</b>	<b>**</b>	<b>**</b>	<b>9</b>	<b>•8</b>	-	-	-
		<b>8899</b>	<b>**</b>	<b>**</b>	<b>9</b>	<b>•5</b>	-	-	-
		<b>8899</b>	<b>**</b>	<b>**</b>	<b>9</b>	<b>•85</b>	-	-	-

**A richiesta:** Cilindri K.A.  
 On request: K.A. cylinders

**Con 5 chiavi**  
 With 5 keys

**Con 5 chiavi K.A.**  
 With 5 K.A. keys

Con spina  
antitrapano

With antidrill  
pin cylinder

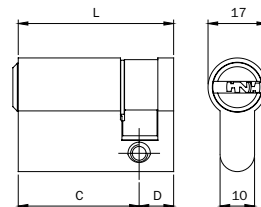
**ISR6**



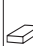

Parti in  
dotazione:

- 3 chiavi
- vite di  
fissaggio  
mm 65

Provided  
with:

- 3 keys
- fixing screw  
65 mm



				Codice								
		Code		Camma Din 8 posizioni		Off center DIN cam 8 positions						
		L mm.	Articolo Article	C	D		Status			Min. ord.		
<b>Ottone</b> Brass	6	40	8809	30	10	7	B	1	10	10		
	6	45	8809	35	10	7	D	1	10	10		
	6	50	8809	40	10	7	B	1	10	10		
	6	60	8809	50	10	7	D	1	10	10		
	6	65	8809	55	10	7	D	1	10	10		
	6	70	8809	60	10	7	D	1	10	10		
	6	75	8809	65	10	7	D	1	10	10		
	6	80	8809	70	10	7	D	1	10	10		
	6	90	8809	80	10	7	D	1	-	1		
	6	100	8809	90	10	7	D	1	-	1		
				8809	**	**	7	•8	-	-	-	-
				8809	**	**	7	••5	-	-	-	-
			8809	**	**	7	•85	-	-	-	-	
<b>Ottone nichelato opaco</b> Mat nickel plated	6	40	8809	30	10	9	A	1	10	10		
	6	45	8809	35	10	9	B	1	10	10		
	6	50	8809	40	10	9	B	1	10	10		
	6	60	8809	50	10	9	C	1	10	10		
	6	65	8809	55	10	9	D	1	10	10		
	6	70	8809	60	10	9	C	1	10	10		
	6	75	8809	65	10	9	D	1	10	10		
	6	80	8809	70	10	9	D	1	10	10		
	6	90	8809	80	10	9	D	1	-	1		
	6	100	8809	90	10	9	D	1	-	1		
				8809	**	**	9	•8	-	-	-	-
				8809	**	**	9	••5	-	-	-	-
			8809	**	**	9	•85	-	-	-	-	

A richiesta: Cilindri K.A.  
On request: K.A. cylinders

Con 5 chiavi  
With 5 keys

Con 5 chiavi K.A.  
With 5 K.A. keys

A richiesta: Cilindri K.A.  
On request: K.A. cylinders

Con 5 chiavi  
With 5 keys

Con 5 chiavi K.A.  
With 5 K.A. keys

**Cilindro di  
sicurezza  
ottone**

Security  
Brass cylinder

**ISEO** Serrature

**Con spina  
antitrapano**

With antidrill  
pin cylinder

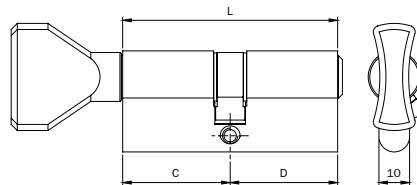
**ISR6**





**Parti in  
dotazione:**

- 3 chiavi
- vite di  
fissaggio  
mm 65

**Provided  
with:**

- 3 keys
- fixing screw  
65 mm



				Codice Code					
				Camma Din sporgente Off center DIN cam					
	L mm.	Articolo Article	C	D		Status			Min. ord.
6	56	8859	28	28	7	D	1	10	10
6	60	8859	30	30	7	B	1	10	10
6	61	8859	28	33	7	D	1	10	10
6	61	8859	33	28	7	D	1	10	10
6	65	8859	30	35	7	C	1	10	10
6	65	8859	35	30	7	D	1	10	10
6	70	8859	30	40	7	C	1	10	10
6	70	8859	35	35	7	B	1	10	10
6	70	8859	40	30	7	C	1	10	10
6	75	8859	30	45	7	D	1	10	10
6	75	8859	45	30	7	D	1	10	10
6	80	8859	35	45	7	D	1	10	10
6	80	8859	40	40	7	C	1	10	10
6	80	8859	45	35	7	D	1	10	10
6	90	8859	30	60	7	D	1	-	1
6	90	8859	40	50	7	C	1	-	1
6	90	8859	45	45	7	C	1	-	1
6	90	8859	50	40	7	C	1	-	1
6	90	8859	60	30	7	C	1	-	1
6	100	8859	60	40	7	D	1	-	1
6	105	8859	50	55	7	D	1	-	1
6	105	8859	60	45	7	D	1	-	1
6	110	8859	50	60	7	D	1	-	1
6	110	8859	60	50	7	D	1	-	1
6	110	8859	80	30	7	D	1	-	1
6	120	8859	65	55	7	D	1	-	1
		8859	**	**	7	•8	-	-	-
		8859	**	**	7	••5	-	-	-
		8859	**	**	7	•85	-	-	-

A richiesta: Cilindri K.A.  
On request: K.A. cylinders

Con 5 chiavi  
With 5 keys

Con 5 chiavi K.A.  
With 5 K.A. keys



**Cilindro di sicurezza  
ottone  
nichelato  
opaco**

Security  
mat nickel  
plated  
brass cylinder

**Con spina  
antitrapano**

With antidrill  
pin cylinder

**ISR6**

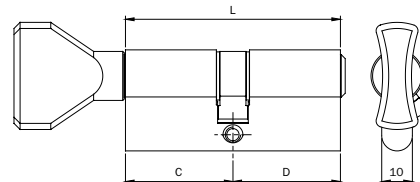
**ISEO Serrature**


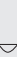


**Parti in  
dotazione:**

- 3 chiavi
- vite di fissaggio mm 65

**Provided  
with:**

- 3 keys
- fixing screw 65 mm



				<b>Codice</b> Code							
				<b>Camma Din sporgente</b> Off center DIN cam							
	L mm.	Articolo Article	C	D		Status			Min. ord.		
6	56	8859	28	28	9	D	1	10	10		
6	60	8859	30	30	9	B	1	10	10		
6	61	8859	28	33	9	C	1	10	10		
6	61	8859	33	28	9	D	1	10	10		
6	65	8859	30	35	9	C	1	10	10		
6	65	8859	35	30	9	D	1	10	10		
6	70	8859	30	40	9	C	1	10	10		
6	70	8859	35	35	9	B	1	10	10		
6	70	8859	40	30	9	C	1	10	10		
6	75	8859	30	45	9	D	1	10	10		
6	75	8859	45	30	9	D	1	10	10		
6	80	8859	35	45	9	D	1	10	10		
6	80	8859	40	40	9	B	1	10	10		
6	80	8859	45	35	9	D	1	10	10		
6	90	8859	30	60	9	D	1	-	1		
6	90	8859	40	50	9	C	1	-	1		
6	90	8859	45	45	9	C	1	-	1		
6	90	8859	50	40	9	D	1	-	1		
6	90	8859	60	30	9	D	1	-	1		
6	100	8859	60	40	9	D	1	-	1		
6	105	8859	50	55	9	D	1	-	1		
6	105	8859	60	45	9	D	1	-	1		
6	110	8859	50	60	9	D	1	-	1		
6	110	8859	60	50	9	D	1	-	1		
6	110	8859	80	30	9	D	1	-	1		
6	120	8859	65	55	9	D	1	-	1		
		<b>8859</b>	<b>**</b>	<b>**</b>	<b>9</b>	<b>•8</b>	-	-	-	-	
		<b>8859</b>	<b>**</b>	<b>**</b>	<b>9</b>	<b>••5</b>	-	-	-	-	
		<b>8859</b>	<b>**</b>	<b>**</b>	<b>9</b>	<b>•85</b>	-	-	-	-	

**A richiesta:** Cilindri K.A.  
On request: K.A. cylinders

**Con 5 chiavi**  
With 5 keys

**Con 5 chiavi K.A.**  
With 5 K.A. keys

**Cilindro di sicurezza ottone** Security Brass cylinder

**Con spina antitrapano** With antidrill pin cylinder

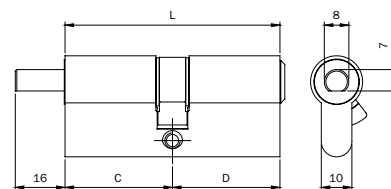
**“Predisposto pomolo”** “Prearranged for knob”

**Parti in dotazione:** Provided with:  
 • 3 chiavi • 3 keys  
 • vite di fissaggio mm 65 • fixing screw 65 mm

**ISR6**



**ISEO Serrature**



		Codice Code							
		Camma Din sporgente Off center DIN cam							
	L mm.	Articolo Article	C	D		Status			Min. ord.
6	56	8869	28	28	7	D	1	10	10
6	60	8869	30	30	7	B	1	10	10
6	61	8869	28	33	7	D	1	10	10
6	61	8869	33	28	7	D	1	10	10
6	65	8869	30	35	7	D	1	10	10
6	65	8869	35	30	7	D	1	10	10
6	70	8869	30	40	7	D	1	10	10
6	70	8869	35	35	7	D	1	10	10
6	70	8869	40	30	7	D	1	10	10
6	75	8869	30	45	7	D	1	10	10
6	75	8869	45	30	7	D	1	10	10
6	80	8869	35	45	7	D	1	10	10
6	80	8869	40	40	7	D	1	10	10
6	80	8869	45	35	7	C	1	10	10
6	90	8869	30	60	7	D	1	-	1
6	90	8869	40	50	7	D	1	-	1
6	90	8869	45	45	7	C	1	-	1
6	90	8869	50	40	7	D	1	-	1
6	90	8869	60	30	7	D	1	-	1
6	100	8869	60	40	7	D	1	-	1
6	105	8869	50	55	7	D	1	-	1
6	105	8869	60	45	7	D	1	-	1
6	110	8869	50	60	7	D	1	-	1
6	110	8869	60	50	7	D	1	-	1
6	110	8869	80	30	7	D	1	-	1
6	120	8869	65	55	7	D	1	-	1
		8869	**	**	7	•8	-	-	-
		8869	**	**	7	•5	-	-	-
		8869	**	**	7	•85	-	-	-

A richiesta: Cilindri K.A.  
On request: K.A. cylinders

Con 5 chiavi  
With 5 keys

Con 5 chiavi K.A.  
With 5 K.A. keys

Per pomoli vedi pag. 119-120  
For Knobs page 119-120

**Cilindro di sicurezza  
ottone  
nichelato  
opaco**  
**Con spina  
antitrapano  
"Predisposto  
pomolo"**

Security  
mat nickel  
plated  
brass cylinder  
  
With antidrill  
pin cylinder  
"Prearranged  
for knob"

**ISR6**

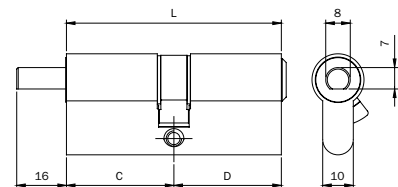
**ISEO Serrature**





**Parti in  
dotazione:**

- 3 chiavi
- vite di  
fissaggio  
mm 65

**Provided  
with:**

- 3 keys
- fixing screw  
65 mm



				<b>Codice</b> Code							
				<b>Camma Din sporgente</b> Off center DIN cam							
	L mm.	Articolo Article	C	D		Status			Min. ord.		
6	56	8869	28	28	9	D	1	10	10		
6	60	8869	30	30	9	D	1	10	10		
6	61	8869	28	33	9	D	1	10	10		
6	61	8869	33	28	9	D	1	10	10		
6	65	8869	30	35	9	B	1	10	10		
6	65	8869	35	30	9	D	1	10	10		
6	70	8869	30	40	9	D	1	10	10		
6	70	8869	35	35	9	B	1	10	10		
6	70	8869	40	30	9	D	1	10	10		
6	75	8869	30	45	9	D	1	10	10		
6	75	8869	45	30	9	D	1	10	10		
6	80	8869	35	45	9	D	1	10	10		
6	80	8869	40	40	9	C	1	10	10		
6	80	8869	45	35	9	C	1	10	10		
6	90	8869	30	60	9	D	1	-	1		
6	90	8869	40	50	9	D	1	-	1		
6	90	8869	45	45	9	C	1	-	1		
6	90	8869	50	40	9	D	1	-	1		
6	90	8869	60	30	9	D	1	-	1		
6	100	8869	60	40	9	D	1	-	1		
6	105	8869	50	55	9	D	1	-	1		
6	105	8869	60	45	9	D	1	-	1		
6	110	8869	50	60	9	D	1	-	1		
6	110	8869	60	50	9	D	1	-	1		
6	110	8869	80	30	9	D	1	-	1		
6	120	8869	65	55	9	D	1	-	1		
		<b>8869</b>	<b>**</b>	<b>**</b>	<b>9</b>	<b>•8</b>	-	-	-	-	
		<b>8869</b>	<b>**</b>	<b>**</b>	<b>9</b>	<b>••5</b>	-	-	-	-	
		<b>8869</b>	<b>**</b>	<b>**</b>	<b>9</b>	<b>•85</b>	-	-	-	-	

**A richiesta:** Cilindri K.A.  
On request: K.A. cylinders

**Con 5 chiavi**  
With 5 keys

**Con 5 chiavi K.A.**  
With 5 K.A. keys

**Per pomoli vedi pag. 119-120**  
For Knobs page 119-120

**Cilindro di sicurezza** Security cylinder

**Con spina antitrapano** With antidrill pin cylinder

**“Predisposto pomolo”** “Prearranged for knob”

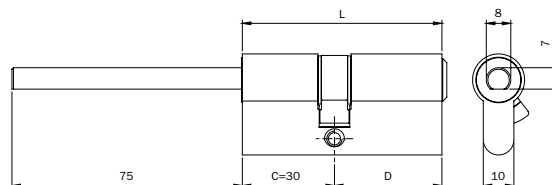
**ISR6**

**Parti in dotazione:**

- 3 chiavi
- vite di fissaggio mm 65

**Provided with:**

- 3 keys
- fixing screw 65 mm



**Ottone**  
Brass

**A richiesta:** Cilindri K.A.  
On request: K.A. cylinders

**Con 5 chiavi**  
With 5 keys

**Con 5 chiavi K.A.**  
With 5 K.A. keys

**Ottone nichelato opaco**  
Mat nickel plated

**A richiesta:** Cilindri K.A.  
On request: K.A. cylinders

**Con 5 chiavi**  
With 5 keys

**Con 5 chiavi K.A.**  
With 5 K.A. keys

		Codice Code							
		Camma Din sporgente Off center DIN cam							
	L mm.	Articolo Article	C= 30 mm.	D		Status			Min. ord.
6	60	8869	D0	30	7	C	1	10	10
6	65	8869	D0	35	7	D	1	10	10
6	70	8869	D0	40	7	C	1	10	10
6	75	8869	D0	45	7	D	1	10	10
6	80	8869	D0	50	7	C	1	10	10
6	90	8869	D0	60	7	D	1	-	1
6	100	8869	D0	70	7	D	1	-	1
		8869	**	**	7	•8	-	-	-
		8869	**	**	7	••5	-	-	-
		8869	**	**	7	•85	-	-	-
6	60	8869	D0	30	9	D	1	10	10
6	65	8869	D0	35	9	D	1	10	10
6	70	8869	D0	40	9	D	1	10	10
6	75	8869	D0	45	9	D	1	10	10
6	80	8869	D0	50	9	D	1	10	10
6	90	8869	D0	60	9	D	1	-	1
6	100	8869	D0	70	9	D	1	-	1
		8869	**	**	9	•8	-	-	-
		8869	**	**	9	••5	-	-	-
		8869	**	**	9	•85	-	-	-

**Cilindro da infilare**  
**Con spina antitrapano**

**Mortice cylinder**  
**With antidrill pin cylinder**

**ISEO Serrature**



**Codice**  
Code  
Camma ISEO sporgente  
Off center ISEO cam



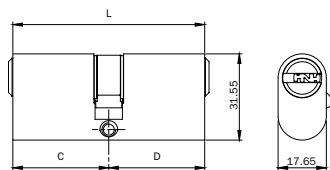
**ISR6** Per mercato U.K.  
For U.K.

**Ottone** Brass  
**Parti in dotazione:**  
• 3 chiavi  
• vite di fissaggio

Provided with:  
• 3 keys  
• fixing screw



A richiesta cilindri K.A.  
On request K.A. cylinders



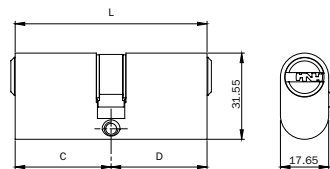
**Ottone nichelato** Nickel plated brass

**Parti in dotazione:**  
• 3 chiavi  
• vite di fissaggio

Provided with:  
• 3 keys  
• fixing screw



A richiesta cilindri K.A.  
On request K.A. cylinders

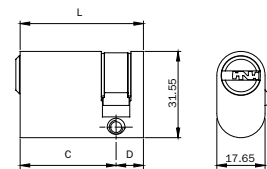


**Ottone** Brass  
**Parti in dotazione:**  
• 3 chiavi  
• vite di fissaggio

Provided with:  
• 3 keys  
• fixing screw



A richiesta cilindri K.A.  
On request K.A. cylinders



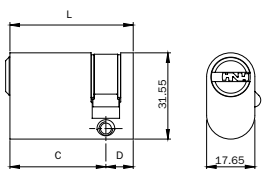
**Ottone nichelato** Nickel plated brass

**Parti in dotazione:**  
• 3 chiavi  
• vite di fissaggio

Provided with:  
• 3 keys  
• fixing screw



A richiesta cilindri K.A.  
On request K.A. cylinders



	L mm.	Articolo Article	C	D			Status			Min. ord.			
6	60	8811	30	30	7		D	1	10	10			
6	70	8811	35	35	7		D	1	10	10			
6	80	8811	40	40	7		D	1	10	10			
		8811	**	**	7	•8	-	-	-	-			
6	60	8811	30	30	9		D	1	10	10			
6	70	8811	35	35	9		C	1	10	10			
6	80	8811	40	40	9		D	1	10	10			
		8811	**	**	9	•8	-	-	-	-			
6	40	8811	30	10	7		D	1	10	10			
6	45	8811	35	10	7		D	1	10	10			
6	50	8811	40	10	7		D	1	10	10			
		8811	**	10	7	•8	-	-	-	-			
6	40	8811	30	10	9		D	1	10	10			
6	45	8811	35	10	9		D	1	10	10			
6	50	8811	40	10	9		D	1	10	10			
		8811	**	10	9	•8	-	-	-	-			

**Cilindro da infilare**  
**Con spina antitrapano**

**Mortice cylinder**  
**With antidrill pin cylinder**

**ISEO Serrature**



**Codice**  
Code  
Camma ISEO sporgente  
Off center ISEO cam



**ISR6**

**Per mercato U.K.**  
**For U.K.**

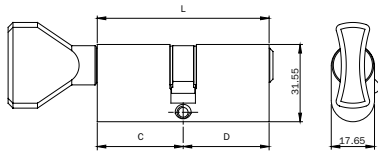
**Ottone** Brass

**Parti in dotazione:**  
• 3 chiavi  
• vite di fissaggio

Provided with:  
• 3 keys  
• fixing screw



A richiesta cilindri K.A.  
On request K.A. cylinders



**Ottone nichelato**

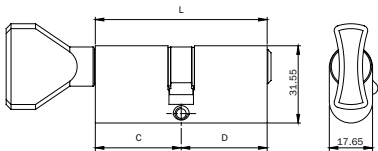
Nikel plated brass

**Parti in dotazione:**  
• 3 chiavi  
• vite di fissaggio

Provided with:  
• 3 keys  
• fixing screw



A richiesta cilindri K.A.  
On request K.A. cylinders



	L mm.	Articolo Article	C	D			Status			Min. ord.
6	60	8871	30	30	7		D	1	10	10
6	70	8871	35	35	7		D	1	10	10
6	80	8871	40	40	7		D	1	10	10
		8871	**	**	7	•8	-	-	-	-
6	60	8871	30	30	9		D	1	10	10
6	70	8871	35	35	9		C	1	10	10
6	80	8871	40	40	9		D	1	10	10
		8871	**	**	9	•8	-	-	-	-

**Cilindro esterno da applicare in ottone**

External brass rim cylinder

**ISEO Serrature**



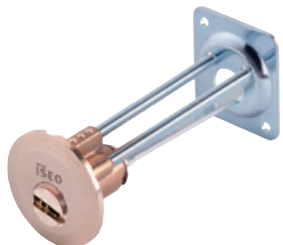
**ISR6**

**Parti in dotazione:**

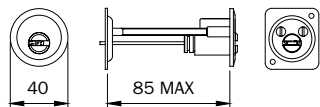
- 3 chiavi
- piastra
- viti di fissaggio

**Provided with:**

- 3 keys
- fixing plate
- fixing screws



A richiesta cilindri K.A.  
On request K.A. cylinders



**Parti in dotazione:**

- 3 chiavi
- piastra
- viti di fissaggio

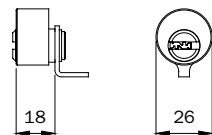
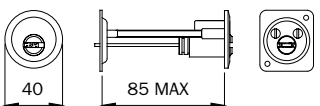
**Provided with:**

- 3 keys
- fixing plate
- fixing screws



Per serie:  
For series:  
421-422-423-424  
425-426-441-442  
483-484-4510-  
5210-5213-5214

A richiesta cilindri K.A.  
On request K.A. cylinders



**Ø mm. 26**

**Ø 26 mm.**

**Parti in dotazione:**

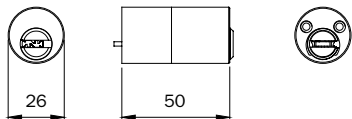
- 3 chiavi
- canotto
- viti fissaggio

**Provided with:**

- 3 keys
- tube
- fixing screws



A richiesta cilindri K.A.  
On request K.A. cylinders



**Ø mm. 26**

**Ø 26 mm.**

**Parti in dotazione:**

- 3 chiavi
- canotto
- viti fissaggio

**Provided with:**

- 3 keys
- tube
- fixing screws



Per serie:  
For series:  
431-432-435-436-  
437-438-450-451  
452-481-482  
485-486  
491-492-493-494  
495-496-4250-  
4210  
4950-4910-4350-  
5200-5203-5204-  
5205-5220-5224-  
5250-5253-5255

A richiesta cilindri K.A.  
On request K.A. cylinders

